

A Guide to Current Values of Wade Figurines as of 2025

This document contains sets of Canadian, US, and UK Wade Figurines,
including several retail and commissioned pieces.

All amounts are in Canadian dollars (in bold) and reflect the typical value in Canada at this time.
Approximate values are also shown in US dollars and UK pounds, converted from the Canadian
amounts for your convenience. For example: **\$15**; (\$11; £9)

CDN USD GBP

A diagram with three arrows pointing from a central point towards the labels 'CDN', 'USD', and 'GBP'.

All photos are by Garry and Elaine Kirsch from their personal collection.

INDEX

Section 1: Canadian Red Rose Tea Promotions	Page 3 – Page 10
Section 2: US Red Rose Tea Promotions	Page 11 – Page 18
Section 3: UK Promotions and Retail Series	Page 19 – Page 53
Section 4: Tom Smith Party Crackers/Wade Christmas Crackers	Page 54 - Page 68
Section 5: New Whimsies	Page 55 – Page 73
Section 6: Wade Collectors Club Members-only Promotions	Page 74 – Page 88
Section 7: Retail, Members-only and Wade Fest Pieces	Page 89 – Page 107

Canadian Red Rose Tea Promotions

Series 1: Animal Figurines (1967 – 1973) \$1-\$2 each unless indicated otherwise



Top to Bottom, Left to Right

Alsatian	Beaver	Mongrel	Kitten
Owl	Otter	Wild Boar (beige)	Corgi
Duck	Seal on Rock	Bear Cub	Giraffe
Rabbit (ears together) \$15 (\$11; £9)	Squirrel	Bush Baby (1: larger back leg)	Poodle
Fox	Hippo (large: 25x45mm)	Fawn	Fantail Goldfish
Bison (large: 32x45mm)	Lion	Chimp	Trout
Setter	Hedgehog (2: 2 pads; dark red brown, honey face, black nose)	Butterfly (beige, blue-grey tips)	Bluebird
Frog (green-yellow)	Alligator	Terrapin (beige, brown markings)	Spaniel

Bush Baby, Type 1: larger back leg
Hedgehog, Type 1: 3 pads

Bush Baby, Type 2: smaller back leg
Hedgehog, Type 2: 2 pads

Glaze and/or minor Mold Variations (RRC Series 1): *\$1-\$2 each unless indicated otherwise*



Top to Bottom, Left to Right

Rabbit (ears apart)	Hippo (small: 20x40mm)	Bison (small: 28x40mm)	
Hedgehog (1: 3 pads; dark brown, honey face, black nose)	Hedgehog (1: 3 pads; light red brown, honey face, black nose)	Butterfly (olive/brown, green tips; very rare) \$6 (\$4; £3)	Wild Boar (brown)
Terrapin (various glaze variations)	Alligator (various glaze variations)		

Series 2: Nursery Rhyme Figurines (1971 – 1979) \$70 (\$2 each unless indicated otherwise)



Top to Bottom, Left to Right

Hickory Dickory Dock	Gingerbread Man \$12 (\$9; £6)	House That Jack Built	Baa, Baa Black Sheep \$5 (\$4; £3)
Humpty Dumpty (honey brown; blue tie, brown wall)	Little Red Riding Hood	Tom, Tom the Piper's Son (honey brown; blue tam, kilt)	Goosey Gander (overall honey with orange beak)
Doctor Foster (brown, grey puddle)	Jack (brown; blue shirt, brown bucket)	Jill	Old Woman in the Shoe (honey brown; red-brown roof)
Little Boy Blue (blue hat)	Little Miss Muffet	Wee Willie Winkie	Old King Cole (gap; brown body, shoes, pot; blue hat, cloak)
Little Jack Horner	Queen of Hearts (2 large hearts)	Little Bo Peep	Puss in Boots
Mother Goose (brown hat, honey brown dress)	Pied Piper (pink/brown coat, green bush)	Cat & the Fiddle \$8 (\$6; £4)	Three Bears (brown, honey base) \$5 (\$4; £3)

Glaze and/or minor Mold Variations (RRC Series 2): \$2 each unless indicated otherwise



Top to Bottom, Left to Right

Queen of Hearts (2 small hearts)	Old King Cole (gap; brown body, blue hat, cloak, shoes, pot)	Old King Cole (no gap; brown body, shoes, pot; blue hat, cloak)	Old King Cole (gap; brown body, shoes, pot, hat; blue cloak)
Dr. Foster (light brown, yellow tie, blue puddle)	Dr, Foster (light brown, blue puddle)	Mother Goose (blue hat, honey brown dress)	Humpty Dumpty (honey brown; brown wall)
Old Woman in the Shoe (honey brown)	Pied Piper (light brown coat, green bush)	Goosey Gander (no beak colour)	Tom, Tom the Piper's Son (honey brown; light brown tam, blue kilt)
Tom, Tom the Piper's Son (honey brown; red- brown tam, blue on kilt)	Tom, Tom the Piper's Son (light beige; blue- grey tam, kilt)	Three Bears (light brown, honey base)	Three Bears (all-over honey; very rare) \$10 (\$7; £6)

Series 3: Whoppas (1981) \$150



Set 1 \$25 (\$5 each; \$4; £3)

Hippo	Brown Bear	Tiger	Polar Bear	Elephant
-------	------------	-------	------------	----------

Set 2 \$50 (\$10 each; \$7; £6)

Bison	Badger	Bobcat	Chipmunk	Timber Wolf
-------	--------	--------	----------	-------------

Set 3 \$75 (\$15 each; \$11; £9)

Stoat	Hedgehog	Raccoon	Otter	Fox
-------	----------	---------	-------	-----

Series 4: Animal Figurines (1982 – 1984) \$1-\$2 each



Top to Bottom, Left to Right

Orangutan (reddish-brown)	Fox	Horse (dark grey; green base)	Gorilla	Rhino	Angel Fish
Lamb	Cow	Collie	Pig (large: 27x44mm)	Zebra	Leopard
Turtle (dark greenish-grey)	Beaver	Rabbit (ears apart)	Langur (1)	Camel (beige- grey; green base)	Giraffe
Bush Baby (2: beige; smaller back leg)	Pine Marten	Pelican	Corgi	Sea Horse	

Note: Four of the figurines were originally issued as part of Series 1 (Fox, Beaver, Giraffe, Corgi)

Langur, Type 1: no gap between stump and head; gap under arm

Glaze and/or minor Mold Variations (RRC Series 4): \$1-\$2 each



Turtle (light greenish-grey)	Pig (small: 25x35mm)	Camel (dark grey; green base)
------------------------------	----------------------	-------------------------------

Series 5: Animal Figurines (1985 – 1986) \$2 each



Top to Bottom, Left to Right

Beaver (brown)	Orangutan (brown)	Gorilla (dk brown)	Langur (1: brown, no gap)	Raccoon (brown)
Polar Bear (white; looking over shoulder)	Camel (beige)	Rhino (grey)	Koala (beige)	Leopard (honey)
Zebra (blue grey)	Giraffe	Pine Marten	Kangaroo (honey-beige)	Tiger (honey)

- 5 first-time Red Rose Tea Canada issues (Raccoon, Polar Bear, Koala, Kangaroo, Tiger); 8 are single-colour glazes of figurines previously issued in Series 4
- The Giraffe was previously issued as part of Series 1 and 4, and the Pine Marten was previously issued as part of Series 4, both in similar glazes

Kellogg Salada Canada, Inc.

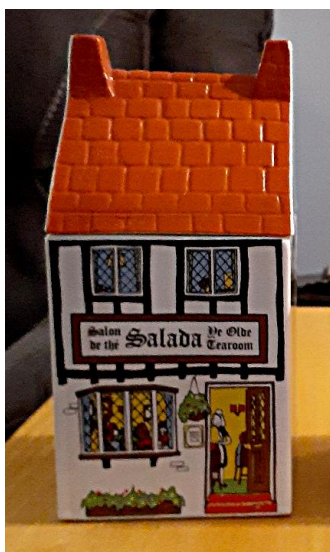
Canadian Salada™ Tea Promotion (1984) \$60; \$44; £35

Kellogg Salada Canada, Inc. began a “mail-in” offer for six miniature houses from the Whimsey-on-Why series from September to December 1984.



Left to Right, Top to Bottom:

Tobacconist's Shop (Whimsey-on-Why set one, #4)	Greengrocer's Shop (Whimsey-on-Why set two, #9)	Whimsey Station (Whimsey-on-Why set three, #18)
Pump Cottage (Whimsey-on-Why set one, #1)	Post Office (Whimsey-on-Why set two, #12)	Antique Shop (Whimsey-on-Why set two, #10)



A tea caddy based on the tea caddy from the Wade “Village Stores” canister set was also available. The original decal over the door was replaced with a decal that had the word “Salada” in the center with “Salon de Thé” on the left and “Ye Olde Tearoom” on the right as required by the Canadian government.

\$60 (\$44; £35)

US Red Rose Tea Promotions

US Series 1 (1983 – 1985) Animals \$45 (\$3 each; \$2; £2)



Top to Bottom, Left to Right

Sea Lion (grey)	Owl (brown)	Hare (brown)	Bison (brown)	Lion (honey)
Hippo (honey)	Bush Baby (beige, smaller back leg)	Elephant (grey)	Otter (beige)	Squirrel (grey-blue/ light blue)
Bird (beige)	Bear Cub (beige)	Wild Boar (beige)	Chimp (brown)	Turtle (greenish- grey)

Several of the above figurines were previously issued in the Red Rose Tea Canada Series or various Tom Smith Crackers sets.

Glaze Variations (US Series 1):



Squirrel (dark blue) \$3; \$2; £2

US Series 2: Animal Figurines (1985 – 1996) \$2 each



Top to Bottom, Left to Right

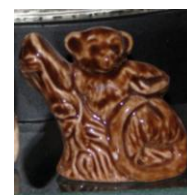
Beaver (brown)	Orangutan (brown)	Gorilla (dk brown)	Langur (1: brown, no gap)	Raccoon (brown)
Polar Bear (white; looking over shoulder)	Camel (beige)	Rhino (grey)	Koala (beige)	Leopard (honey)
Zebra (blue grey)	Giraffe	Pine Marten	Kangaroo (honey-beige)	Tiger (honey)

- This set of 15 was also distributed as Series 5 (1985 – 1986) in the Red Rose Tea Canada promotion.



Five of the Tom Smith “Your Pets” figurines were added to the US Series 2 in 1990 (green Cockatiel, beige Shetland Pony, grey Kitten, honey Puppy, and the brown Bunny - \$8 each; \$6; £5)	1992 Olive-brown glaze variation of the Tiger \$2
---	---

All twenty figurines were made available in 1992 as a “mail-in” offer with Red Rose Decaffeinated Tea. It has been reported that a few of the figurines were in slightly different glazes but in general they were identical to the original twenty. A mold variation of the Langur was issued with a gap between the stump and head.



US Series 3 (1994 – 1999) Circus Animals \$45 (\$3 each; \$2; £2)



Top to Bottom, Left to Right

Sitting Elephant (pale blue)	Standing Elephant (pale blue)	Male Monkey (dark brown, teapot)	Female Monkey (dark brown, teacup)	Seal (light grey)
Poodle (light blue skirt)	Lion (honey)	Bear (dark brown)	Tiger (ruff beneath chin; slightly smaller paws)	Horse (beige)
Human Cannonball (grey)	Strongman (honey)	Ringmaster (grey)	Clown with Bucket (green)	Clown with Pie (blue)

Ten figurines were previously issued as Tom Smith “Circus” Crackers and used again here, eight with different glazes or modified molds and two identical in both sets. The last five figurines were added in 1996 and were new molds used for the first time in the US series.

US Series 4 (1998 – 2002) Endangered North American Animals \$30 (\$3 each; \$2; £2)



Top to Bottom, Left to Right

Manatee (blue-grey)	Peregrine Falcon (beige)	Sturgeon (blue)	
Bald Eagle (honey)	Humpback Whale (grey)	Timber Wolf (grey)	Polar Bear (white: looking forward)
Green Sea Turtle (green)	Spotted Owl (beige)	Florida Panther (honey)	

The Polar Bear was first issued in the Tom Smith “Survival” set, the Spotted Owl was first issued as the Barn Owl in the UK 2nd Whimsies, and the Bald Eagle was first issued in the Whimsie-Land “British Wildlife” set – all used again here with different glazes. Seven of the figurines were new molds used for the first time in this US series.

US Series 5 (2002 – 2006) Noah's Ark \$110 for Ark and figurines
\$65 for the Ark (\$48; £38), **\$3 each for the figurines** (\$2; £2)



Overhead view

Top to Bottom, Left to Right

Noah and his wife	Elephant (female; trunk down)	Elephant (male; trunk up)	Hen (on nest)
Rooster (standing)	Ewe (head down)	Ram (head up)	Rhino (male; head up)
Rhino (female; head down)	Zebra (female; lying)	Zebra (male; standing)	Lion (with mane)
Lioness (lying)	Goose (preening)	Gander (feeding)	

Fourteen male and female animals, representing seven kinds of wildlife, and a single figurine of Noah and his wife (all new molds) made up the set of 15. A separate ceramic Ark was sold by mail, which was used to display the Noah Series.

US Series 6 (2007 – 2008) Pet Shop Friends \$95 for Pet Shop and figurines
\$65 for the Pet Shop (\$48; £38), **\$3 each for the figurines** (\$2; £2)



Top to Bottom, Left to Right

Duck	Kittens	Rabbit	Turtle	Puppies	Tropical Fish
	Cat	Pony		Labrador	Budgie

These ten figurines were commissioned using new molds. A separate ceramic base with a pet shop structure at its center was sold by mail for displaying this series.

US Series 7 (2008 – 2012) Calendar \$60 (\$5 each; \$4; £3)

A ceramic stand was available to display the 12 Calendar figurines (\$50; \$37; £29)



Top to Bottom, Left to Right

Snowman (January)	Cupid (February)	Leprechaun (March)	Easter Bunny (April)
Mother's Day Flowers (May)	Graduation (June)	Uncle Sam (July)	Sandcastle (August)
Scarecrow (September)	Pumpkin Kitty (October)	Turkey (November)	Christmas Tree (December)

US Series 8 (2012 – 2016) Nautical Wonderland \$60 (\$5 each; \$4; £3)



Top to Bottom, Left to Right

Lighthouse	Diver's Helmet	Mermaid	Seagull	Treasure Chest	Sail Boat
Ship's Wheel	Compass	Conch Shell	Crab	Starfish	Seahorse

Limited Edition (2012) Hand-painted Nautical Wonderland \$240 (\$20 each; \$15; £12)

Commissioned by Red Rose Tea for the 2012 Red Rose Tea Fair in Windsor, Connecticut



Top to Bottom, Left to Right

Lighthouse (white, black, yellow)	Diver's Helmet (blue, black, yellow)	Mermaid (white, turquoise, orange, peach)	Seagull (white, grey, yellow)	Treasure Chest (brown, black, yellow)	Sail Boat (white, brown, blue)
Ship's Wheel (brown, white, yellow)	Compass (blue, white, red)	Conch Shell (butterscotch, peach, honey)	Crab (butterscotch, red)	Starfish (lilac)	Seahorse (light yellow, green, peach)

US Series 9 (2016 – 2020) American Heritage \$100 (\$10 each; \$7; £6)



Top to Bottom, Left to Right

Tractor	Tea Crates	Bison	White House	Space Shuttle
Liberty Bell	Arrowhead	Patriot Hat	Covered Wagon	Steam Engine

In 2018 Red Rose Tea no longer included one figurine in their boxes of tea. Online ordering from the Red Rose Tea website (Original Black Tea 100ct) was only available to US residents, while supplies lasted...

© 2025, Garry and Elaine Kirsch
April 24, 2025

www.birdingandmore.com/wade

US Series 10 (2020 – 2023) World Monuments \$200 (\$20 each; \$15; £12)



Leaning Tower of Pisa	China Wall	Taj Mahal	Statue of Liberty	Easter Island Moai
Golden Gate Bridge	Eiffel Tower	Sydney Harbour Bridge (Opera House)	Big Ben	Sphinx

As of July 2020 Red Rose Tea offered one new Wade Figurine from the World Monuments series in each box of their Red Rose Bold & Mellow blends. Online ordering was only available to US residents. (With the closure of the Wade Factory in England, distribution of this series will be only as long as supplies last.)

UK Tea Promotions (1969 – 1970)

Brooke Bond Oxo Ltd., England \$1-\$2 each



Seal on Rock	Bear Cub	Fox	Pine Marten	Bushbaby	Otter
Duck	Fantail Goldfish	Owl	Bison (small)	Trout	Corgi
Setter	Beaver	Frog	Butterfly (beige; dark grey tips; raised circles)		

These were issued following the success of the promotion for Red Rose Tea Canada and were the same figurines except the Butterfly had darker grey tips and there was also briefly a glaze variation with green tips. This was the first time the Pine Marten was issued in a set.

UK Retail Wade Whimsie Figurines

First Whimsies (1953 – 1959)



Set 1 (1953) \$50

Leaping Fawn \$12 (\$9; £7)	Spaniel \$8 (\$6; £5)	Horse \$12 (\$9; £7)	Squirrel \$8 (\$6; £5)	Poodle \$10 (\$7; £6)
--------------------------------	--------------------------	-------------------------	---------------------------	--------------------------

Set 2 (1954) \$95

Jumping Lamb \$10 (\$7; £6)	Dachshund \$30 (\$22; £17)	Bull \$20 (\$15; £12)	Kitten \$25 (\$18; £14)	Hare \$10 (\$7; £6)
--------------------------------	-------------------------------	--------------------------	----------------------------	------------------------



Set 3 (1955) \$60

Badger \$10 (\$7; £6)	Stoat \$15 (\$11; £9)	Shetland Pony \$7 (\$5; £4)	Retriever \$8 (\$6; £5)	Fox Cub \$20 (\$15; £12)
--------------------------	--------------------------	--------------------------------	----------------------------	-----------------------------

Set 4 (Jungle Set, 1955) \$55

Lion \$15 (\$11; £9)	Monkey \$10 (\$7; £6)	Rhinoceros \$10 (\$7; £6)	Crocodile \$10 (\$7; £6)	Elephant \$10 (\$7; £6)
-------------------------	--------------------------	------------------------------	-----------------------------	----------------------------



Top Row: Set 5 (1956) \$45

Colt \$12 (\$9; £7)	Mare \$9 (\$7; £5)	Beagle \$12 (\$9; £7)	Foal \$12 (\$9; £7)
----------------------------	---------------------------	------------------------------	----------------------------

Bottom Row: Set 6 (Polar Set, 1956) \$35

Husky \$10 (\$7; £6)	Polar Bear Cub \$6 (\$4; £3)	Polar Bear \$6 (\$4; £3)	King Penguin \$7 (\$5; £4)	Baby Seal \$6 (\$4; £3)
--------------------------------	--	------------------------------------	--------------------------------------	-----------------------------------

“Blow-up” First Whimsies Polar Set (1962) \$280



L-R:

Baby Seal 4 ¾” x 5” **(\$80;** \$59; £46)

Polar Bear Cub 3 ¾” x 4” **(\$90;** \$66; £52)

Polar Bear 6” x 5 ¾” **(\$110;** \$80; £63)



Top Row: Set 7 (Pedigree Dogs, 1957) \$50

Alsatian \$10 (\$7; £6)	Boxer \$10 (\$7; £6)	St. Bernard \$10 (\$7; £6)	Corgi \$10 (\$7; £6)	West Highland Terrier \$10 (\$7; £6)
----------------------------	-------------------------	-------------------------------	-------------------------	---

Bottom Row: Set 8 (Zoo Set, 1957) \$50

Cockatoo \$10 (\$7; £6)	Llama \$10 (\$7; £6)	Bactrian Camel \$10 (\$7; £6)	Giant Panda \$10 (\$7; £6)	Lion Cub \$10 (\$7; £6)
----------------------------	-------------------------	----------------------------------	-------------------------------	----------------------------

Variation:



Large Giant Panda \$12 (\$9; £7)



Top Row: Set 9 (North American Animals, 1958) \$50

Snowy Owl \$10 (\$7; £6)	Raccoon \$8 (\$6; £5)	Grizzly Bear \$6 (\$4; £3)	Grizzly Cub \$6 (\$4; £3)	Cougar \$20 (\$15; £12)
------------------------------------	---------------------------------	--------------------------------------	-------------------------------------	-----------------------------------

Bottom Row: Set 10 (Farm Animals, 1959) \$175

Foxhound \$15 (\$11; £9)	Pig \$15 (\$11; £9)	Shire Horse \$70 (\$51; £41)	Italian Goat \$25 (\$18; £14)	Swan \$50 (\$37; £29)
------------------------------------	-------------------------------	--	---	---------------------------------

Variation:



White Grizzly Bear Cub \$25 (\$18; £14)
--

Balding and Mansell “Flintstone Party Crackers” (1965) \$32



Top to Bottom, Left to Right

Rhino \$6 (\$4; £3)	Dino \$6 (\$4; £3)	Tiger \$6 (\$4; £3)	Bronti \$6 (\$4; £3)
Bluebird \$2	Terrapin \$2	Crocodile \$2	Hedgehog \$2

Balding and Mansell “Wade Animal Party Crackers” (late 1960’s) \$42



Top to Bottom, Left to Right

Rhino \$6 (\$4; £3)	Dino \$6 (\$4; £3)	Tiger \$6 (\$4; £3)	Bronti \$6 (\$4; £3)
Hippo (<i>honey</i>) \$2	Giraffe (<i>beige</i>) \$2	Zebra (<i>black</i>) \$12 (\$9; £7)	Wild Boar (<i>beige</i>) \$2

UK Second Whimsies (1971 – 1984) \$1-\$2 each unless indicated otherwise
All multi-coloured/multi-shades; 25 were first commissioned for Red Rose Tea Canada in 1967

Picture 1: issued in 1971 - 1973



Top to Bottom, Left to Right

Fawn	Rabbit (ears apart)	Mongrel	Kitten	Spaniel
Duck	Corgi	Beaver	Bush Baby (1: larger back leg)	Fox
Bear Cub	Otter	Setter	Owl	Trout
Lion	Elephant \$5 (\$4; £3)	Giraffe	Chimp	Hippo (large: 25x45mm)

Picture 2: issued in 1974 – 1977



Top to Bottom, Left to Right

Squirrel	Hedgehog	Pine Marten	Field Mouse (with grain) \$5 (\$4; £3)	Alsatian
Collie	Cow	Pig (large: 27x44mm)	Horse (dark grey; brown/green base)	Lamb
Rhino	Leopard	Gorilla	Camel (dark grey; green base)	Zebra (beige; green base)
Donkey \$5 (\$4; £3)	Barn Owl \$5 (\$4; £3)	Cat (sitting) \$5 (\$4; £3)	Mouse (sitting) \$5 (\$4; £3)	Ram \$5 (\$4; £3)

Picture 3: issued in 1978 - 1980



Top to Bottom, Left to Right

Dolphin \$5 (\$4; £3)	Pelican	Angel Fish	Turtle	Sea Horse
Kangaroo (brown)	Orangutan	Tiger	Koala (beige; green base) \$5 (\$4; £3)	Langur (1: with green leaves) \$5 (\$4; £3)
Bison (large: 32x45mm)	Bluebird	Frog/Bullfrog (brown) \$5 (\$4; £3)	Wild Boar (beige; green base) \$5 (\$4; £3)	Raccoon (brown; green base) \$5 (\$4; £3)
Penguin (grey back; white front; yellow beak & feet) \$5 (\$4; £3)	Seal Pup (beige; blue base) \$5 (\$4; £3)	Husky (dark grey; green base) \$5 (\$4; £3)	Walrus	Polar Bear (white; black nose; blue base) \$5 (\$4; £3)

UK Second Whimsies Glaze and/or minor Mold Variations: \$1-\$2 each unless indicated otherwise



Horse (light grey or beige; green base) \$5 (\$4; £3)	Hippo (small: 20x40mm)	Bison (small: 28x40mm)	Pig (small: 25x35mm)	Wild Boar (all beige)
---	---------------------------	---------------------------	-------------------------	--------------------------

Whoppas (1976 – 1981) \$150



Top to Bottom, Left to Right

Set 1 \$25 (\$5 each; \$4; £3)

Hippo	Brown Bear	Tiger	Polar Bear	Elephant
-------	------------	-------	------------	----------

Set 2 \$50 (\$10 each; \$7; £6)

Bison	Badger	Bobcat	Chipmunk	Timber Wolf
-------	--------	--------	----------	-------------

Set 3 \$75 (\$15 each; \$11; £9)

Stoat	Hedgehog	Raccoon	Otter	Fox
-------	----------	---------	-------	-----

Whimsie-Land Series (1984 – 1988)

Whimsie-Land Set 1, 1984 (*Pets*) \$30 (\$6 each; \$4; £3)



Retriever	Kitten	Rabbit	Puppy	Pony
-----------	--------	--------	-------	------

Whimsie-Land Set 2, 1984 (*Wildlife*) \$40 (\$8 each; \$6; £5)



Panda	Tiger	Lion	Giraffe	Elephant
-------	-------	------	---------	----------

Whimsie-Land Set 3, 1985 (*Farmyard*) \$40 (\$8 each; \$6; £5)



Rooster	Pig	Cow	Goat	Duck
---------	-----	-----	------	------

Whimsie-Land Set 4, 1986 (*Hedgerow*) \$60 (\$12 each; \$9; £7)



Badger	Fox	
Squirrel	Hedgehog	Owl

Whimsie-Land Set 5, 1987 (*British Wildlife*) \$135



Otter \$15 (\$11; £9)	Golden Eagle \$30 (\$22; £17)	Field Mouse \$50 (\$37; £29)	Partridge \$15 (\$11; £9)	Pheasant \$25 (\$18; £14)
---------------------------------	---	--	-------------------------------------	-------------------------------------

Miscellaneous Retail Sets

Disney Hat Box Series (1956 – 1965)

Lady and the Tramp (1956-60)



Lady \$10 (\$7; £6)	Tramp (standing) \$25 (\$18; £14)	Jock, no coat (1956) \$20 (\$15; £12)	Trusty \$10 (\$7; £6)
Peg ("blonde" hair fringe) \$10 (\$7; £6)	Scamp \$10 (\$7; £6)	Dachie \$10 (\$7; £6)	
Si \$30 (\$22; £17)	Am \$23 (\$17; £14)	Boris \$30 (\$22; £17)	Toughy \$35 (\$26; £20)



Jock, with blue coat (early 1957) **\$30** (\$22; £17)
with green coat (late 1957) **\$30** (\$22; £17)

Bambi (1958)



Bambi \$20 (\$15; £12)	Flower \$30 (\$22; £17)	Thumper \$20 (\$15; £12)
---------------------------	----------------------------	-----------------------------

Dumbo and Fantasia (1958)



Dumbo, green hat (prototype) \$50 (\$37; £29)	Dumbo, yellow hat \$35 (\$26; £20)	Baby Pegasus \$30 (\$22; £17)
--	---------------------------------------	----------------------------------

Blow-up Tramp (1960) 6" high \$105 (\$76; £60)



101 Dalmations (1960)



The Colonel \$35 (\$26; £20)	Sergeant Tibbs \$40 (\$29; £23)	Lucky \$45 (\$33; £26)	Rolly \$40 (\$29; £23)
--	---	----------------------------------	----------------------------------

The Sword in the Stone (1964)



Merlin as a Turtle \$120 (\$87; £68)	Madam Mim \$80 (\$59; £46)	Merlin as a Caterpillar \$90 (\$66; £52)
The Girl Squirrel \$60 (\$44; £35)	Merlin as a Hare \$90 (\$66; £52)	Archimedes \$60 (\$44; £35)

Drum Box Series (1956 – 1959) \$210

Animal Band



Dora, the Soprano \$70 (\$52; £41)	Harpy, the Harpist \$35 (\$26; £20)	Trunky, the Drummer \$35 (\$26; £20)	Jem, the Tuba Player \$35 (\$26; £20)	Clara, the Cellist \$35 (\$26; £20)
---	--	---	--	--

Disney's Series (1981 – 1987)

Reissues from the 1956 "Hat Box" Series (1981 – 1987)

Peg \$10 (\$7; £6) (hair fringe is "beige" instead of "blonde")	Lady \$10 (\$7; £6) (no change)	Jock \$25 (\$18; £14) (mouth is now "pink" instead of "purple")	Scamp \$15 (\$11; £9) (ears are now "pink" instead of "mauve")
Dachsie \$10 (\$7; £6) (no change, other than to the spelling of his name)	Bambi \$25 (\$18; £14) (eyes are now "light brown" rather than "dark brown")	Thumper \$25 (\$18; £14) (flower is now "light orange" rather than "dark orange")	Tramp \$30 (\$22; £17) (new mold, sitting; similar to the 1961 "Blow-up" version)

For any of these minor changes, it is very difficult to recognize the differences unless you have the two pieces beside each other.

The Fox and the Hound (1982 - 1987)



Chief \$25 (\$18; £14)	Copper \$25 (\$18; £14)	Big Mama \$35 (\$26; £20)	Tod \$60 (\$44; £35)
----------------------------------	-----------------------------------	-------------------------------------	--------------------------------

Dogs and Puppies (1969 – 1982)

Alsatian (1969) \$20



Alsatian Puppy, sitting up \$5 (\$4; £3)	Alsatian Puppy, reclining \$5 (\$4; £3)	Adult Alsatian \$10 (\$7; £6)
--	---	---

Cairn (1969) \$25



Cairn Puppy, reclining \$6 (\$4; £3)	Cairn Puppy, standing up \$6 (\$4; £3)	Adult Cairn \$13 (\$10; £8)
--	--	---------------------------------------

Red Setter (1973) \$25



Red Setter Puppy, reclining \$6 (\$4; £3)	Red Setter Puppy, kneeling \$6 (\$4; £3)	Adult Red Setter \$13 (\$10; £8)
---	--	--

Corgi (1979) \$70



Corgi Puppy, sitting up \$17 (\$13; £10)	Corgi Puppy, reclining \$17 (\$13; £10)	Adult Corgi \$36 (\$26; £21)
--	---	--

Yorkshire Terrier (1979) \$115



Adult Yorkshire Terrier \$36 (\$26; £21)	Yorkshire Terrier Puppy, standing \$40 (\$29; £23)	Yorkshire Terrier Puppy, sitting \$40 (\$29; £23)
--	--	---

Nursery Favourites (1972 – 1981)

Set 1 (1972) \$40 (\$8 each; \$6; £5)



Jack	Jill	Little Miss Muffet	Little Jack Horner	Humpty Dumpty
------	------	--------------------	--------------------	---------------

Set 2 (1973) \$60



Willie Winkie \$12 (\$9; £7)	Mary Lamb \$12 (\$9; £7)	Polly Kettle \$16 (\$12; £9)	King Cole \$10 (\$7; £6)	Tom Piper \$10 (\$7; £6)
--	------------------------------------	--	------------------------------------	------------------------------------

Set 3 (1974) \$80



Boy Blue \$16 (\$12; £9)	Mary Mary \$12 (\$12; £9)	Cat & Fiddle \$20 (\$15; £12)	Queen of Hearts \$16 (\$12; £9)	Tommy Tucker \$16 (\$12; £9)
------------------------------------	-------------------------------------	---	---	--

Set 4 (1976) \$230



Puss in Boots \$20 (\$15; £12)	Three Bears \$40 (\$29; £23)	Goosey Gander \$80 (\$59; £47)	Bo-Peep \$30 (\$22; £17)	Old Woman in a Shoe \$60 (\$44; £35)
--	--	--	------------------------------------	--

Tom and Jerry novelty figurines (1973) \$45

Based on the popular cartoon series



Tom \$25 (\$18; £15)	Jerry \$20 (\$15; £12)
--------------------------------	----------------------------------

Horse Sets (1974 – 1981)

Set 1 (1974) \$25



Foal, standing \$7 (\$5; £4)	Foal, lying down \$7 (\$5; £4)	Horse \$11 (\$8; £6)
--	--	--------------------------------

Set 2 (1978) \$80



Foal, trying to stand up \$20 (\$15; £12)	Foal, lying down \$20 (\$15; £12)	Horse \$40 (\$29; £23)
---	---	----------------------------------

Championship Dogs (1975 – 1981) \$150 (\$30 each; \$22; £17)



Old English Sheep Dog	Collie	Setter
Afghan Hound		Cocker Spaniel

Aquarium Set (1975 – 1980)

Commissioned by King Aquariums Ltd. for sale in pet stores only



Lighthouse (beige/honey; grey-green base) \$55 (\$40; £32)	Seahorse (blue/beige pattern) \$125 (\$91; £71)	Snail/Whelk (honey; green-grey shell) \$25 (\$18; £14)	Mermaid (beige; yellow hair; grey-green base) \$55 (\$40; £32)	Diver (honey; brown base) \$35 (\$26; £20)	Bridge (beige; light brown base) \$85 (\$63; £49)
---	--	---	---	---	---

Whimsey-on-Why (1980 – 1987)

Miniature villages and buildings for a fictional town of Whimsey-on-Why. Each building is individually identified with a small number enclosed in a circle, usually found on the back or in a corner. Four sets of eight and one set of four were issued.

Set 1 (1980)

1-Pump Cottage \$7 (\$5; £4)	2-Morgan's the Chemist \$7 (\$5; £4)	3-Dr. Healer's House \$9 (\$7; £5)	4-Tobacconist's Shop \$7 (\$5; £4)
5-Why Knott Inn \$7 (\$5; £4)	6-Bloodshott Hall \$10 (\$7; £6)	7-St. Sebastian's Church \$10 (\$7; £6)	8-The Barley Mow \$12 (\$9; £7)

Set 2 (1981)

9-Greengrocer's Shop \$7 (\$5; £4)	10-Antique Shop \$7 (\$5; £4)	11-Whimsey Service Station \$9 (\$7; £5)	12-Post Office \$9 (\$7; £5)
13-Whimsey School \$12 (\$9; £7)	14-Water Mill \$12 (\$9; £7)	15-The Stag Hotel \$12 (\$9; £7)	16-Windmill \$30 (\$22; £17)

Set 3 (1982)

17-Tinker's Nook \$12 (\$9; £7)	18-Whimsey Station \$9 (\$7; £5)	19-Merryweather Farm \$12 (\$9; £7)	20-The Vicarage \$15 (\$11; £9)
21-Broomshaw Cottage \$10 (\$7; £6)	22-The Sweet Shop \$12 (\$9; £7)	23-Briar Row \$12 (\$9; £7)	24-The Manor \$12 (\$9; £7)

Set 4 (1984-1985)

25-District Bank \$20 (\$15; £12)	26-Old Smithy \$10 (\$7; £6)	27-Picture Palace \$15 (\$11; £9)	28-The Butcher's Shop \$18 (\$13; £10)
29-The Barber's Shop \$18 (\$13; £10)	30-Miss Prune's House \$12 (\$9; £7)	31-Fire Station \$15 (\$11; £9)	32-Market Hall \$15 (\$11; £9)

Set 5 (1987)

33-School Teacher's House \$60 (\$44; £35)	34-Fishmonger's Shop \$60 (\$44; £35)	35-Police Station \$60 (\$44; £35)	36-Library \$60 (\$44; £35)
--	---	--	---------------------------------------

Wade also issued a display card marked with locations appropriate for each of the buildings.

Snow White and the Seven Dwarfs (1981 – 1986) \$250



Happy \$30 (\$22; £17)	Grumpy \$30 (\$22; £17)	Sleepy \$30 (\$22; £17)	Bashful \$30 (\$22; £17)
Doc \$30 (\$22; £17)	Dopey \$30 (\$22; £17)	Sneezzy \$30 (\$22; £17)	Snow White \$40 (\$29; £23)

Bally-Whim (1984 – 1987)

Produced at Wade's Irish pottery, Bally-Whim is the Irish equivalent of Whimsey-on-Why. These buildings were also identified with a number enclosed in a circle, displayed on the back or in a corner. Only one set of eight was issued.

1-Undertaker's House \$18 (\$13; £10)	2-Moore's Post Office \$15 (\$11; £9)	3-Barney Flynn's Cottage \$10 (\$7; £6)	4-Kate's Cottage \$15 (\$11; £9)
5-The Dentist's House \$18 (\$13; £10)	6-Mick Murphy's Bar \$12 (\$9; £7)	7-W. Ryan's Hardware Store \$12 (\$9; £7)	8-Bally-Whim House \$15 (\$11; £9)

Mini Mansions / San Francisco's Painted Ladies (1984 – 1986)

A set of five ornately decorated tall Victorian homes. A tiny cable car is included with the set and each piece is identified with SF/#. The houses are numbered 1-5 and the cable car is 6.

SF/1-Pink Lady \$225 (\$164; £128)	SF/2-White Lady \$220 (\$160; £125)	SF/3-Brown Lady \$220 (\$160; £125)	SF/4-Yellow Lady \$150 (\$109; £85)	SF/5-Blue Lady \$150 (\$109; £85)
--	---	--	--	---

The cable car (\$300) has "Fisherman's Wharf" on the side, although in some sets the cable car reads "Maritime Museum".

Brighton Pavilion (1988) \$165

Commissioned by the Brighton Corporation, this three piece set replicates the exotic looking, nineteenth-century structure built for King George IV in the British resort town of Brighton.



2 7/8" high circular building topped by a large bulbous dome \$75 (\$55; £44)	One 1 7/8" high, multi-windowed rectangular building with a pair of smaller domes \$45 (\$33; £26)	A second 1 7/8" high, multi-windowed rectangular building with a pair of smaller domes \$45 (\$33; £26)
--	---	--

The two rectangular buildings are placed on either side of the larger circular one.

Coronation Street Houses (1988 – 1989) \$100

Granada Television commissioned Wade to produce this set of three of the show's actual buildings. Three of the molds used for Whimsey-on-Why were used for this set.



The Rover's Return \$40 (\$29; £23)	The Corner Shop \$25 (\$18; £14)	The Duckworths \$35 (\$26; £20)
---	--	---

Sherwood Forest Series (1989 – 1994)

Mianco Partners of Canada (formerly POS-NER Associates)

Issued in quantities of 5,000 figurines per model, except the blue/green Friar Tuck which was issued in a limited quantity of 450. Each figurine was mold marked with MIANCO plus the year of issue and Wade England or Wade.



Robin Hood (1989) \$20 (\$15; £12)	Maid Marian (1990) \$20 (\$15; £12)	Friar Tuck (brown; 1994) \$20 (\$15; £12)	Friar Tuck (blue/green; 1998) \$25 (\$18; £14)
---	--	--	---

The blue/green colourway of Friar Tuck was commissioned for the 1998 Wade/Jim Beam Fair held in Buffalo, NY. Sheriff of Nottingham was sampled but never went into production.

My Fair Ladies (1990 – 1992) \$160 (\$10 each; \$7; £6)



Set 1 (1990-91) Top to Bottom, Left to Right \$80 (\$56; £48)

Marie (deep green)	Sarah (pale green)	Hannah (pale green)	Lisa (light blue)
Caroline (dark blue, light blue)	Rebecca (pale blue)	Rachel (blue trim)	Kate (pale blue trim, red flowers)



Set 2 (1991-92) Top to Bottom, Left to Right \$80 (\$56; £48)

Melissa (dark blue, light blue)	Amanda (burgundy, peach)	Belinda (pale green)	Anita (pale peach)
Emma (pale yellow)	Natalie (pale blue-grey)	Lucy (burgundy, pale grey)	Diane (blue, pale grey)

Sophisticated Ladies (1991 – 1992) \$400 (\$100 each; \$73; £58)



Emily (bright red, yellow sleeves)	Susannah (bright yellow)	Felicity (black, pale yellow)	Roxanne (pale blue, pale mauve)
------------------------------------	--------------------------	-------------------------------	---------------------------------

Whimsey-in-the-Vale (1993)

Wade created this miniature village using ten of the molds from Whimsey-on-Why. The buildings were given a unique look with different decorations and the addition of village residents appearing on the transfers. Whimsey-in-the-Vale buildings were not individually numbered.

Boar's Head Pub (<i>The Barley Mow, Whimsey-on-Why Set 1</i>) \$18 (\$13; £10)	St. John's School (<i>The Fire Station, Whimsey-on-Why Set 4</i>) \$18 (\$13; £10)	Jubilee Terrace (<i>Briar Row, Whimsey-on-Why Set 3</i>) \$16 (\$12; £9)	Town Garage (<i>Market Hall, Whimsey-on-Why Set 4</i>) \$18 (\$13; £10)
Antique Shop (<i>Why Knott Inn, Whimsey-on-Why Set1</i>) \$10 (\$7; £6)	St. Lawrence Church (<i>St. Sebastian's Church, Whimsey-on-Why Set1</i>) \$15 (\$11; £9)	Whimsey Post Office (<i>Antique Shop, Whimsey-on-Why Set 2</i>) \$10 (\$7; £6)	Florist Shop (<i>Whimsey Service Station, Whimsey-on-Why Set2</i>) \$12 (9; £7)
Vale Farm (<i>The Stag Hotel, Whimsey-on-Why Set 2</i>) \$15 (\$11; £9)	Rose Cottage (<i>Post Office, Whimsey-on-Why Set2</i>) \$12 (\$9; £7)		

A display card showing the village layout was available to accompany the buildings.

Dinosaur Collection (1993, 2001 & 2008)

Inspired by films such as Jurassic Park, released in 1993

Set One (1993) \$50 (\$10 each; \$7; £6)



Spinosaurus (beige; grey spines; brown base)	Protoceratops (brown; green base)	Camarasaurus (brown/honey; green base)	Euoplocephalus (red-brown/honey; green base)	Tyrannosaurus Rex (dark brown/honey; green base OR grey; greenish- brown base)
---	---	--	--	---

Set Two (2001) \$72 (\$12 each; \$9; £7)



Top to Bottom, Left to Right

Protoceratops (beige; green base)	Nodosaurus (grey; grey- green base)	Scutellosaurus (honey; brown base)
Vulcanodon (blue; mottled grey-blue base)	Saurolophus (green; brown base)	Corythosaurus (apricot; blue-grey base)

This set was used again for the 2005 Absolutely Crackers Dinosaurs promotion

Set Three (2008) \$90 (\$15 each; \$11; £9)



Top to Bottom, Left to Right

Allosaurus (<i>green</i>)	Brachiosaurus (<i>blue</i>)	Lambeosaurus (<i>orange</i>)
Ankylosaurus (<i>brown</i>)	Maiasaura (<i>brown</i>)	Coelophysis (<i>grey</i>)

Bear Ambitions (1995 – 1998) \$36 (\$6 each; \$4; £3)

All-over single honey glaze



Top to Bottom, Left to Right

Musical Marco	Beatrice Ballerina	Artistic Edward
Alex the Aviator	Locomotive Joe	Admiral Sam

Water Life Collection (1997) \$60 (\$10 each; \$7; £6)



Top to Bottom, Left to Right

Octopus (<i>grey octopus; sea green-blue waves</i>)	Hermit Crab (<i>orange crab; grey-blue waves</i>)	Goldfish (<i>orange fish; blue-grey, orange streaked water</i>)
Whale (<i>light blue whale; blue waves</i>)	Seahorse (<i>beige seahorse; dark blue waves</i>)	Alligator (<i>green</i>)

The Collector – In The Forest Deep (1997 – 1999) \$140 (\$20 each, \$15; £12)



Oswald Owl (1997)	Morris Mole (1997)	Santa Hedgehog (1997)	Bertram Badger (1998)	Tailwarmer Squirrel (1998)	Gentleman Rabbit (1999)	Huntsman Fox (1999)
-------------------	--------------------	-----------------------	-----------------------	----------------------------	-------------------------	---------------------

The Camelot Collection (1997 – 2008) \$100 (\$20 each; \$15; £12)



King Arthur	Queen Guinevere	Lady of the Lake	Sir Lancelot	Merlin the Wizard
-------------	-----------------	------------------	--------------	-------------------

Myths & Legends (1998) \$290



St. George and the Dragon (patron saint of England) \$25 (\$18; £14)	The Mermaid (supposedly lived in the Pool of Blake-Mere in Staffordshire) \$40 (\$29; £23)	Puck (Hobgoblin from Shakespeare's <i>A Midsummer Night's Dream</i>) \$25 (\$18; £14)	The Cornish Tin Mine Pixie (mine dwelling goblins of Cornwall and Devon) \$25 (\$18; £14)	The Green Man (Jack-in-the-Green, a central figure in May Day celebrations) \$25 (\$18; £14)	King Canute (legendary English King who mistakenly thought he could turn back the incoming tide) \$150 (\$109; £85)
--	--	--	---	--	---

Green Bear Ambitions (1998) \$36 (\$6 each; \$4; £3)

all-over single green glaze



Alex the Aviator	Locomotive Joe	Beatrice Ballerina	Artistic Edward	Admiral Sam	Musical Marco
---------------------	-------------------	-----------------------	--------------------	----------------	------------------

Travelling Badger and Travelling Frog (1998) \$40 (\$20 each, \$15; £12)



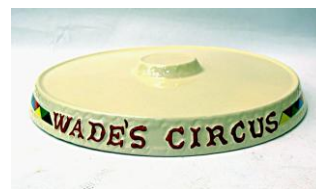
C&S Collectables Direct Ltd. (2001 – 2002)
Animaland Set (Original) \$40 each (\$30; £23)



Bear Cub		Snowy Owl	
Elephant	Otter	Panda	

Circus Set (2003) \$105 (\$15 each; \$11; £9)

In 2003 Wade produced a new circus set, available from the Wade Shop and through retail outlets. A Circus Ring display base was produced for this set with WADE'S CIRCUS embossed on the base edge, sold separately (\$75; \$55; £44).



Top to Bottom, Left to Right

Lion (<i>honey; brown mane; multi-coloured drum base</i>)		Strongman (<i>brown hair; white/brown spotted leotard; tan shoes; multi-coloured drum base</i>)		Pony (<i>white; brown mane; blue saddle; multi-coloured drum base</i>)	
Clown (<i>yellow-green suit, hat; blue car</i>)		Ringmaster (<i>black coat, top hat, boots; red waistcoat; white pants; yellow bow tie; multi-coloured drum base</i>)		Bear (<i>brown, red hat; yellow waistcoat; multi-coloured drum base</i>)	
				Elephant (<i>grey; yellow, green blanket; multi-coloured drum base</i>)	

My Pet Collection (2006) \$200

A set of eight extra-large dogs \$25 each (\$18; £15)



Beagle	Black & White Jack Russell	Puppy Play No. 1	Labrador
--------	----------------------------	------------------	----------



Tan & White Jack Russell	Blue Merle Border Collie	Puppy Play No. 2	Black & White Border Collie (<i>not shown</i>)
--------------------------	--------------------------	------------------	--

Tom Smith Party Crackers (1973 – 1999)

Animate Crackers (1973-75) \$16 (\$2 each)



Top to Bottom, Left to Right

Alsatian	Fantail Goldfish (RRC)	Wild Boar (beige)	Pine Marten
Bullfrog (RRC: light yellow-green; recessed base)	Bluebird (recessed base)	Butterfly (RRC: recessed base)	Terrapin (RRC: green-grey; recessed base)

Safari Park (1976-77) \$30 (\$3 each; \$2; £2)



Top to Bottom, Left to Right

Koala (dark grey & beige)	Orangutan (ginger)	Raccoon (light brown; light green base)	Kangaroo (dark brown; light brown base)	Musk Ox (grey; beige face)
Polar Bear (beige; blue base; looking over shoulder)	Lion (honey; green base)	Walrus (light beige; grey base)	Langur (beige; brown stump)	Tiger (honey; green base)

Glaze Variations:



Lion (all-over honey) **\$3** (\$2; £2)

© 2025, Garry and Elaine Kirsch
April 24, 2025

www.birdingandmore.com/wade

Circus Animal Set (1978-79) \$30 (\$3 each; \$2; £2)



Top to Bottom, Left to Right

Elephant, sitting (blue)	Elephant, standing (blue)	Boy Monkey, with teapot (beige; blue teapot)	Girl Monkey, with teacup (beige; blue skirt)	Sea Lion (light green-grey)
Poodle (white; blue skirt)	Lion (honey)	Bear (red-brown)	Tiger (no ruff beneath chin)	Pony (beige)

Glaze Variations:



Sea Lion (dark green-grey) **\$6** (\$4; £3)

British Wildlife Set (1980-81) \$32 (\$4 each; \$3; £2)



Top to Bottom, Left to Right

Dormouse	Fox, standing (red-brown)	Badger (green-grey)	Squirrel (red-brown)
Hare (honey)	Mole (green-grey)	Partridge	Weasel

Farmyard (1982-83) \$48 (\$6 each; \$4; £3)



Top to Bottom, Left to Right

Goose (honey-brown; brown beak)	Dog (honey; brown base)	Duck, swimming (white; blue base)	Cow (orange-brown)
Horse (light brown; green base)	Pig (pale pink)	Bull (dark brown)	Goat (white; green base)

Farmyard Glaze Variations: \$6 each (\$4; £3)



Goat (all-over beige)	Dog (all-over brown)	Horse (all-over beige)
Duck (all-over white)	Duck (all-over blue)	Duck (all-over beige)

World of Survival (1984-85) \$32 (\$4 each; \$3; £2)



Top to Bottom, Left to Right

Sea Lion (blue-grey)	Gorilla, seated (brown)	Armadillo (green-grey)	North American Bison (brown)
Whale (blue-grey)	Golden Eagle (honey)	Polar Bear (dull white; facing forward)	Sea Turtle (green)

Wildlife (1986-87) \$32 (\$4 each \$3; £2)



Top to Bottom, Left to Right

Dolphin (blue)	Orangutan (brown)	Leopard (honey)	Koala (beige)
Penguin (white)	Kangaroo (beige)	Rhino (blue-grey)	Wild Boar (beige)

Nursery Rhyme Crackers (1988) \$12 (\$2 each)

Same as those used in the Red Rose Tea Canada promotion



Top to Bottom, Left to Right

Wee Willie Winkie	Old King Cole (gap)	Old Woman Who Lived in a Shoe
Hickory Dickory Dock	Humpty Dumpty	Bo-Peep

The Village of Broadlands (1988) ~\$1,000 (~\$750; ~£600)

Five molds were used from the Whimsey-on-Why series but with different decorations and names. Ten buildings were planned but due to high costs only these five were produced. Very hard to find.

Rose Cottage (based on Pump Cottage, #1 from Set 1)	The Pink House (based on The Sweet Shop, #22 from Set 3)	The Chapel (based on Whimsey School, #13 from Set 2)
The Coach House Garage (based on Whimsey Station, #18 from Set 3)	The Village Store (based on The Greengrocer's Shop, #9 from Set 2)	

Your Pets ... Family Pets (1988-89) \$64 (\$8 each; \$6; £5)



Top to Bottom, Left to Right

Cockatiel (green)	Mouse (white)	Guinea Pig (honey)	Puppy (honey)
Pony (beige)	Kitten (blue)	Bunny (brown)	Guppy Fish (green)

Your Pets ... Family Pets Glaze Variations: \$8 each (\$6; £5)



Pony (very light beige)	Puppy (beige)
-------------------------	---------------

World of Dogs (1990-91) \$48 (\$6 each; \$4; £3)



Top to Bottom, Left to Right

Alsatian (brown)	Spaniel (black)	Corgi (honey)	Poodle (peach)
Mongrel (grey)	West Highland Terrier (white)	Bull Dog (beige)	Husky (white)

Bird Life (1992-93) \$40 (\$5 each; \$4; £3)



Top to Bottom, Left to Right

Goose (honey)	Barn Owl (grey)	Wren (beige)	Duck, preening (white)
Rooster (green)	Eagle (beige)	Partridge (beige)	Pelican (brown)

Snow Life (1992-97) \$50 (\$5 each; \$4; £3)



Top to Bottom, Left to Right

Whale (grey)	Snow Goose (white)	Hare (white)	Fox (ginger)	Walrus (beige)
Polar Bear (white; looking over shoulder)	Penguin (grey)	Snowy Owl (white)	Reindeer (2: beige)	Seal Pup (blue-grey)

Glaze and/or minor Mold Variations:



Reindeer (gap between legs), beige \$6 (\$4; £3)	Reindeer (gap between legs), very light beige \$6 (\$4; £3)
--	---

Tales from the Nursery (1994-97) \$80 (\$8 each; \$6; £5)



Top to Bottom, Left to Right

Boy Blue (blue)	Jack Horner (beige)	Tom Piper (honey)	Humpty Dumpty (grey)	Queen of Hearts (apricot)
Dr. Foster (brown)	Cat and the Fiddle (grey)	Bo-Peep (burgundy)	Hickory Dickory Dock (beige)	Ride a Cock Horse (green)

Cat Collection (1996-97) \$80 (\$8 each; \$6; £5)



Top to Bottom, Left to Right

Cat, standing (beige)	Cat and the Fiddle (brown)	Leopard (honey)	Puss in Boots (dark grey)	Lion, standing (honey)
Kitten, sitting with ball of yarn (peach)	Cat, sitting (beige)	Kitten, lying with ball of yarn (facing left; dark blue)	Tiger (honey)	Cat, stalking (apricot)

Cat Collection Glaze Variations: \$8 each (\$6; £5)



Cat and the Fiddle (grey)	Puss in Boots (light grey)	Kitten (facing left; light blue)
---------------------------	----------------------------	----------------------------------

Christmas Time Crackers (1996-97) [Previously issued in 1995 as *Bear Ambitions* in all honey]
\$36 (\$6 each; \$4; £3)



Alex the Aviator (light brown)	Locomotive Joe (dark brown)	Beatrice Ballerina (honey)	Artistic Edward (light brown)	Admiral Sam (dark brown)	Musical Marco (honey)
--------------------------------------	-----------------------------------	----------------------------------	-------------------------------------	--------------------------------	--------------------------

Hedgerow (1998-99) \$56 (\$7 each; \$5; £4)



Top to Bottom, Left to Right

Badger (grey)	Rabbit (honey)	Mole (grey)	Otter (brown)
Butterfly (blue)	Mouse (honey)	Hare (beige)	Squirrel (peach)

Sea Life (1998-99) \$56 (\$7 each; \$5; £4)



Top to Bottom, Left to Right

Snail (bright blue)	Seal (brown)	Whale (bright blue)	Angel Fish (light green)
Dolphin (grey)	Turtle (light green)	Sea Horse (apricot)	Walrus (honey)

Wade Ceramics Limited Christmas Crackers (2001 – 2008)

Christmas Crackers Nursery Set (2001) \$56 (\$7 each; \$5; £4)

New colorways of eight Red Rose Tea Canada Nursery Rhyme figurines



Top to Bottom, Left to Right

Dr. Foster (grey; black umbrella; brown bag)	Mother Goose (beige; greenish-grey hat)	Jack (beige; brown hair; green grass)	Jill (beige; yellow hair; green grass)
Little Jack Horner (beige; yellow hair; brown plum, shoes)	Goosey Gander (white; yellow beak, feet)	Little Miss Muffet (beige; yellow hair; black spider)	Wee Willie Winkie (grey; brown hair)

Christmas Crackers Safari Set (2003) \$42 (\$7 each; \$5; £4)

New colorways of Whimsie-Land Set 2 plus two new molds



Top to Bottom, Left to Right

Elephant (WL; grey; olive green base)	Lion (WL; honey; dark brown mane; olive green base)	Panda (WL; black/white; blue-green base)
Alligator (<i>new</i> ; light green; blue base)	Tiger (WL; honey; brown stripes; mottled green base)	Giraffe (<i>new</i> ; beige)

The same figurines were also used for the 2003 Absolutely Crackers Safari Whimsies set

Christmas Crackers Red Hat Snowmen Set (2008) \$90 (\$15 each; \$11; £9)



Top to Bottom, Left to Right

Mr. Frost (with snowballs)	Mr. Snow (with 3 buttons)	Mr. Christmas (with book)
Mr. Cold (no hat)	Mr. Winter (with broom)	Mr. Chill (with mug)

Absolutely Crackers (2001 – 2005)

Bird Whimsies (2001) \$56 (\$7 each; \$5; £4)

New colorways for seven of the Tom Smith Birdlife plus the Snowy Owl from the Whimsie-Land Set 2



Top to Bottom, Left to Right

Rooster (TS; light grey)	Snowy Owl (WL; honey)	Eagle (TS; tan)	Goose (TS; brown)
Partridge (TS; light blue)	Pelican (TS; white)	Wren (TS; pale green)	Duck, preening (TS; beige)

Safari Whimsies (2003) \$42 (\$7 each; \$5; £4)

New colorways of Whimsie-Land Set 2 plus two new molds



Top to Bottom, Left to Right

Elephant (WL; grey; olive green base)	Lion (WL; honey; dark brown mane; olive green base)	Panda (WL; black/white; blue-green base)
Alligator (<i>new</i> ; light green; blue base)	Tiger (WL; honey; brown stripes; mottled green base)	Giraffe (<i>new</i> ; beige)

The same figurines were also used for the 2003 Christmas Crackers Safari Set

Dinosaurs (2005) \$72 (\$12 each; \$9; £7)

Dinosaur Set 2 from 2001 used by Absolutely Crackers for this promotion



Top to Bottom, Left to Right

Protoceratops (<i>beige; green base</i>)	Nodosaurus (<i>grey; grey-green base</i>)	Scutellosaurus (<i>honey; brown base</i>)
Vulcanodon (<i>blue; mottled grey-blue base</i>)	Saurolophus (<i>green; brown base</i>)	Corythosaurus (<i>apricot; blue-grey base</i>)

New Colorway Whimsies (1998 – 2003)

Re-issues from previous **Red Rose Tea Canada**, **Whimsies**, **Whimsie-Land**, and **Tom Smith** molds

Whimsies Set 1 (1998) – Set “A” **\$48** (\$8 each; \$6; £5)



Top to Bottom, Left to Right

Hippo (<i>Whimsies Set 4</i> ; light grey; blue base)	Lion, lying (<i>TS “Safari”</i> ; honey; bright green base)	Raccoon (<i>Whimsies Set 11</i> ; light grey; black nose; striped tail)
Mole (<i>TS “Wildlife”</i> ; light grey; pale green base)	Gorilla, standing (<i>Whimsies Set 7</i> ; beige; grey-blue base)	Leopard (<i>Whimsies Set 7</i> ; pale honey; bright green base)

Whimsies Set 2 (2000) – Set “B” **\$48** (\$8 each; \$6; £5)



Top to Bottom, Left to Right

Kitten, sitting (<i>Whimsies Set 1</i> ; apricot; dark brown yarn)	Beaver (<i>Whimsies Set 2</i> ; light grey; dark brown stump)	Elephant (<i>Whimsies Set 4</i> ; honey; bright green base)
Polar Bear (<i>Whimsies Set 12</i> ; white; blue base)	Pup (<i>TS “Your Pets”</i> ; honey; dark brown ears)	Zebra (<i>Whimsies Set 7</i> ; white; black stripes)

Whimsies Set 3 (2001) – Nursery Set 1 \$48 (\$8 each; \$6; £5)



Top to Bottom, Left to Right

Little Red Riding Hood (<i>RRC</i> ; grey; yellow basket; black shoes)	Queen of Hearts (<i>RRC</i> ; pale honey; dark red hearts)	Hickory Dickory Dock (<i>RRC</i> ; apricot; dark brown mouse)
Puss 'n Boots (<i>RRC</i> ; blue; black eyes, nose, boots)	Old Woman in a Shoe (<i>RRC</i> ; apricot; yellow-brown roof; green base)	Humpty Dumpty (<i>RRC</i> ; pale honey; black bow tie, shoes; grey wall)

Whimsies Set 4 (2001) – Nursery Set 2 \$48 (\$8 each; \$6; £5)



Top to Bottom, Left to Right

Cat and the Fiddle (<i>RRC</i> ; apricot; dark brown fiddle; tan bow)	Gingerbread Man (<i>RRC</i> ; honey; yellow hair; green base)	Little Boy Blue (<i>TS</i> “ <i>Tales From the Nursery</i> ”; blue; green hat; dark brown shoes; yellow horn)
Bo-Peep (<i>RRC</i> ; blue; dark brown crook; pink bow)	Tom the Piper’s Son (<i>RRC</i> ; honey; grey tam, kilt, socks; black shoes)	Ride a Cock Horse (<i>TS</i> “ <i>Tales From the Nursery</i> ”; apricot; orange hair; black shoes)

Whimsies Set 5 (2003) – Farmyard \$48 (\$8 each; \$6; £5)



Top to Bottom, Left to Right

Rooster (<i>WL Set 3</i> ; white; red comb; blue wings, tail; grey base)	Pig (<i>WL Set 3</i> ; pink; bright green base)	Cow (<i>WL Set 3</i> ; white; tan patches; green base)
Goat (<i>WL Set 3</i> ; white; brown patch; green base)	Duck (<i>WL Set 3</i> ; white; yellow beak; blue wings; green base)	Pony (<i>WL Set 1</i> ; white; brown patches; green base)

The Exclusive Wade Whimsies Magazine Collection 2007 \$75 (\$15 each; \$11; £9)

The figurines were based on similar molds to Whimsie-Land and Tom Smith figurines.



Farm Cockerel (<i>WL Set 3</i> : white; orange comb; grey-blue wings, tail; blue base)	Golden Retriever Pup (<i>Whimsies Set 3</i> : white; honey ears, legs, tail; green base)	Woodland Badger (<i>TS "British Wildlife" Set</i> : black; white stripe around eye; dark green base)	Farm Cow (<i>WL Set 3</i> : white; black patches; green base)	Farm Duck (<i>WL Set 3</i> : white; orange beak, feet; honey wings and back; blue base)
---	---	---	--	--

New Whimsies (2004 – 2008)

New molds

Whimsies Set 6 (2004) – Set “C” **\$90 (\$15 each; \$11; £9)**



Duck	Puppy	Fox	Sitting Cat	Penguin	Standing Cat
------	-------	-----	-------------	---------	--------------

Whimsies Set 7 (2005) – Family Pets – Dogs **\$90 (\$15 each; \$11; £9)**



Setter	Great Dane	Bull Terrier	Bassett Hound	Boxer	Spaniel
--------	------------	--------------	---------------	-------	---------

Whimsies Set 8 (2006) – Family Pets – Cats **\$90 (\$15 each; \$11; £9)**

Standing Cat	Cat and Kitten	Persian Cat
Lying Cat	Brown and White Cat	Tabby Cat

Whimsies Set 9 (2008) – Family Pets – Birds **\$90 (\$15 each; \$11; £9)**



Magpie	Robin	Grey Jack Daw
Seagull	Grey Wood Pigeon	Blue Tit

C&S Collectables Direct Ltd. (2008)
Animaland Set (Whimsies) \$7 each (\$5; £4)



Elephant	Bear Cub	Cougar	Giraffe	Zebra	Panda
----------	----------	--------	---------	-------	-------

C&S Collectables Direct Ltd. (2012)
Snap, Crackle, Pop miniatures set \$8 each (\$6; £5)



Pop	Crackle	Snap	Coco
-----	---------	------	------

25th Anniversary of the Wade Collectors Club – Whimsie Special (2019)
Three Little Pigs and the Big Bad Wolf \$100 (\$25 each; \$18; £14)

Four miniature figurines based on the 1995 Wade Collectors Club Membership Series first issue



House of Straw	House of Wood	House of Brick	Big Bad Wolf
----------------	---------------	----------------	--------------

Wade Collectors Club Members-only Promotions

Official International Wade Collectors Club membership piece (renewal or new) (1994/95)

September 1994 – August 1995



Burslem, the Factory Cat **\$30** (\$22; £17)

Official International Wade Collectors Club members-only series (renewal or new) (1995)

The Three Little Pigs and the Big Bad Wolf **\$120** (\$30 each; \$22; £17)



<i>February:</i> House of Straw	<i>May:</i> House of Wood	<i>November:</i> House of Brick	<i>August:</i> Big Bad Wolf
------------------------------------	------------------------------	------------------------------------	--------------------------------

Official International Wade Collectors Club membership piece (renewal or new) (1995/96)

September 1995 – August 1996



Christmas Puppy **\$30** (\$22; £17)

Official International Wade Collectors Club membership Enrol a Friend scheme (1996)

If a new member quotes the membership number of the active member who referred them, they both receive the “Enrol a Friend” figurine.



Seal Pup, white on blue base \$10 (\$7; £6)
--

Official International Wade Collectors Club members-only series (renewal or new) (1996)

Goldilocks and the Three Bears \$100 (\$25 each; \$18; £14)



<i>February:</i> Mummy Bear	<i>May:</i> Daddy Bear	<i>August:</i> Goldilocks	<i>November:</i> Baby Bear
--------------------------------	---------------------------	------------------------------	-------------------------------

Official International Wade Collectors Club membership piece (renewal or new) (1996/97)

September 1996 – August 1997



Smudger, Scottie Dog \$30 (\$22; £17)
--

Official International Wade Collectors Club members-only series (renewal or new) (1997)
Pantomime Series \$100 (\$25 each, \$18; £15)



<i>February:</i> Pantomime Horse	<i>May:</i> Mother Goose	<i>August:</i> Dick Whittington's Cat	<i>November:</i> Pantomime Dame
-------------------------------------	-----------------------------	--	------------------------------------

Official International Wade Collectors Club membership piece (renewal or new) (1997/98)
September 1997 – December 1998



Wade Baby \$10 (\$7; £6)

Official International Wade Collectors Club members-only Bonus Gift
to the first 10,000 members worldwide began being distributed in late 1998



Cobalt Blue Angel Fish \$10 (\$7; £6)

In 2007 a cobalt Angel Fish with silver eyes and base was commissioned by Happy Wade-ing and sold to members on their e-mail announcement list (limited edition of 125)

© 2025, Garry and Elaine Kirsch
April 24, 2025

www.birdingandmore.com/wade

Official International Wade Collectors Club members-only series (renewal or new) (1998)

Toy Box Series \$100 (\$25 each, \$18; £15)



<i>February:</i> Toy Soldier	<i>May:</i> Amelia Bear	<i>August:</i> “Chuckles” the Clown	<i>November:</i> Emily
---------------------------------	----------------------------	--	---------------------------

Official International Wade Collectors Club members-only series (renewal or new) (1999)

Alice in Wonderland \$200



<i>Membership Piece:</i> Alice \$25 (\$18; £14)	<i>February:</i> Madhatter \$25 (\$18; £14)	<i>May:</i> White Rabbit \$25 (\$18; £14)	<i>August:</i> Dormouse \$25 (\$18; £14)	<i>November:</i> Cheshire Cat \$25 (\$18; £14)	<i>Special Edition:</i> Queen of Hearts \$75 (\$55; £45)
--	--	--	---	---	---

Alice was the membership piece free upon renewal or new membership, and the Queen of Hearts was a special edition piece available only to members who had purchased the complete set.

Official International Wade Collectors Club members-only series (renewal or new) (2000)
Wind in the Willows \$320



<i>Membership Piece:</i>	<i>February:</i>	<i>May:</i>	<i>August:</i>	<i>November:</i>	<i>Special Edition:</i>
Toad of Toad Hall	Mole	Badger	Rattie	Weasel	Rattie and Mole
\$50 (\$37; £29)	\$50 (\$37; £29)	\$50 (\$37; £29)	\$50 (\$37; £29)	\$50 (\$37; £29)	\$70 (\$51; £41)

Official International Wade Collectors Club members-only series (renewal or new) (2001)
Cinderella \$175



<i>Membership piece:</i>	<i>February:</i>	<i>May:</i>	<i>August:</i>	<i>November:</i>	<i>Special Edition piece:</i>
Cinderella	Ugly Stepsister: Clorinda	Ugly Stepsister: Thisbe	Prince Charming	Cinderella Ready for the Ball	Fairy Godmother
\$20 (\$15; £12)	\$20 (\$15; £12)	\$20 (\$15; £12)	\$20 (\$15; £12)	\$20 (\$15; £12)	\$75 (\$55; £43)

Official International Wade Collectors Club members-only series (renewal or new) (2002)
Peter Pan \$200



<i>Membership piece:</i> Peter Pan \$20 (\$15; £12)	<i>February:</i> Tinkerbell \$35 (\$26; £20)	<i>May:</i> John \$20 (\$15; £12)	<i>August:</i> Michael \$20 (\$15; £12)	<i>November:</i> Wendy \$20 (\$15; £12)	<i>Special Edition piece:</i> Captain Hook and Crocodile \$85 (\$55; £43)
--	---	---	---	---	---

Official International Wade Collectors Club members-only series (renewal or new) (2003)
Beauty and the Beast \$210



<i>Membership Piece:</i> Beauty \$25 (\$18; £14)	<i>February:</i> The Beast \$25 (\$18; £14)	<i>May:</i> Beauty's Father \$25 (\$18; £14)	<i>August:</i> The Witch \$25 (\$18; £14)	<i>November:</i> The Prince \$25 (\$18; £14)	<i>Special Edition:</i> Beauty and The Beast Dancing \$85 (\$62; £50)
---	---	--	--	---	---

Official International Wade Collectors Club membership piece (renewal or new) (2004)



“Blow-up” Leaping Lamb \$15 (\$11; £9)

Official International Wade Collectors Club members-only series (renewal or new) (2004)
Snap, Crackle, Pop \$170



<i>February:</i> Pop \$30 (\$22; £17)	<i>May:</i> Crackle \$30 (\$22; £17)	<i>August:</i> Coco the Monkey \$30 (\$22; £17)	<i>November:</i> Snap \$30 (\$22; £17)	<i>Special Edition:</i> Tony the Tiger Surfin' \$50 (\$37; £29)
--	---	--	---	---

Official International Wade Collectors Club membership piece (renewal or new) (2005)



“Blow-up” Shetland Pony \$20 (\$15; £12)

Official International Wade Collectors Club membership piece (renewal or new) (2006)



Tetley Tea Gaffer and Gordon \$30 (\$22; £17)
--

Official International Wade Collectors Club membership piece (renewal or new) (2007)



Felix the Cat, waving \$20 (\$15; £12)

Official International Wade Collectors Club members-only series (renewal or new) (2007)

Animals From Around the World \$180 (\$15 each; \$11; £9)

The Wade Collectors Club began issuing three new Whimsies with each quarterly magazine.

Set 1 (February 2007)

Snowy Owl	King Cobra	Brown Hare
-----------	------------	------------

Set 2 (May 2007)

Toco Toucan	Palm Cockatoo	African Lion
-------------	---------------	--------------

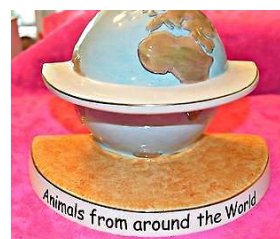
Set 3 (August 2007) \$15

Eurasian Lynx	Polar Bear	Grey Wolf
---------------	------------	-----------

Set 4 (November 2007) \$15 each

Bengal Tiger	Wilde Beest	Frilled Lizard
--------------	-------------	----------------

An Animals From Around the World display stand was sold to members who had purchased all four sets of the figurines issued during the 2007 membership year. (Limited Edition of 478) **\$75** (\$55; £44)



Official International Wade Collectors Club membership piece (renewal or new) (2008)



Laughing Felix \$20 (\$15; £12)
--

Official International Wade Collectors Club members-only series (renewal or new) (2008)
Under the Sea \$180 (\$15 each; \$11; £9)

Again, the Wade Collectors Club issued three new Whimsies with each quarterly magazine (limited edition of 500 per set).



Set 1 (February 2008)

Octopus	Lobster	Sea Lion
---------	---------	----------

Set 2 (May 2008)

The Mermaid	Clown Fish	Crab, with Treasure Chest
-------------	------------	---------------------------

Set 3 (August 2008)

Penguins	Manatee	Seahorse
----------	---------	----------

Set 4 (November 2008)

Diver	Pelican	Dolphin
-------	---------	---------

An Under the Sea display stand was sold to members who had purchased all four sets of the figurines issued during the 2008 membership year. (Limited Edition of 434) **\$75** (\$55; £44)



Official International Wade Collectors Club members-only series (renewal or new) (2009)
Snow White and the Seven Dwarfs \$165

Chosen as the members only series for 2009, this set was based on the original story, not on the Disney animated movie. Due to copyright restrictions, the dwarfs could not use the Disney names.



Top to Bottom, Left to Right

Snow White (issued to all new and renewing members) \$20 (\$15; £12)	The Prince \$20 (\$15; £12)	The Witch \$20 (\$15; £12)	Dwarf 1 (pushing a wheel barrow) \$15 (\$11; £9)	Dwarf 2 (with a handkerchief) \$15 (\$11; £9)
Dwarf 3 (sitting) \$15 (\$11; £9)	Dwarf 4 (with a pickaxe on shoulder) \$15 (\$11; £9)	Dwarf 5 (sitting in wheel barrow) \$15 (\$11; £9)	Dwarf 6 (with bucket) \$15 (\$11; £9)	Dwarf 7 (leaning on pickaxe) \$15 (\$11; £9)

The Dwarfs House was issued as a display stand and sold to members who had purchased all nine figurines issued during the 2009 membership year. **\$75** (\$55; £44)



Official International Wade Collectors Club members-only series (renewal or new) 2010
Alice in Wonderland Series Limited Edition of 250 ~\$140
 (\$15 each; \$11; £9 / Plaque \$5; \$4; £3)



Top to Bottom, Left to Right

King of Hearts	Queen of Hearts	Painting the Roses (Playing Card)	Mock Turtle	Jabberwocky
Mad Hatter	White Rabbit	Alice (issued to all new and renewing members)	Plaque	Cheshire Cat

A limited edition display stand was sold to members who had purchased the full set issued during the 2010 membership year. **\$75** (\$55; £44)



Official International Wade Collectors Club membership (renewal or new) (2011)
World of Survival Series ~\$150 (\$17 each; \$12; £10)

A ceramic display base was sold separately to members who had purchased the complete set (\$70; \$51; £41)



Top to Bottom, Left to Right

Polar Bear	Rhino	Hippo
Elephant	Tiger	Bison
Cougar	Gorilla	Lion

Original “World of Survival” Black Rhinoceros (1978) \$250 (\$180; £150)
 9 ½” long by 4 1/2” high



Shown next to the Wade Collectors Club 2011 “World of Survival” Rhinoceros for comparison

Official International Wade Collectors Club membership (renewal or new) (2012)
Miniature Jessie Van Hallen Ladies \$108 (\$12 each; \$9; £7)



*Pavlova was a gift to new members or for renewals.
 The stand was available, for purchase, to those who
 had purchased the full set by the end of the year.*

Pavlova	Conchita	Sylvia
Sunshine	Helga	Curtsey
Pompadour	Joan	Barbara



2012 Display Stand \$75 (\$55; £44)

Official International Wade Collectors Club membership (renewal or new) (2013)
Miniature Jessie Van Hallen Ladies \$108 (\$12 each; \$9; £7)



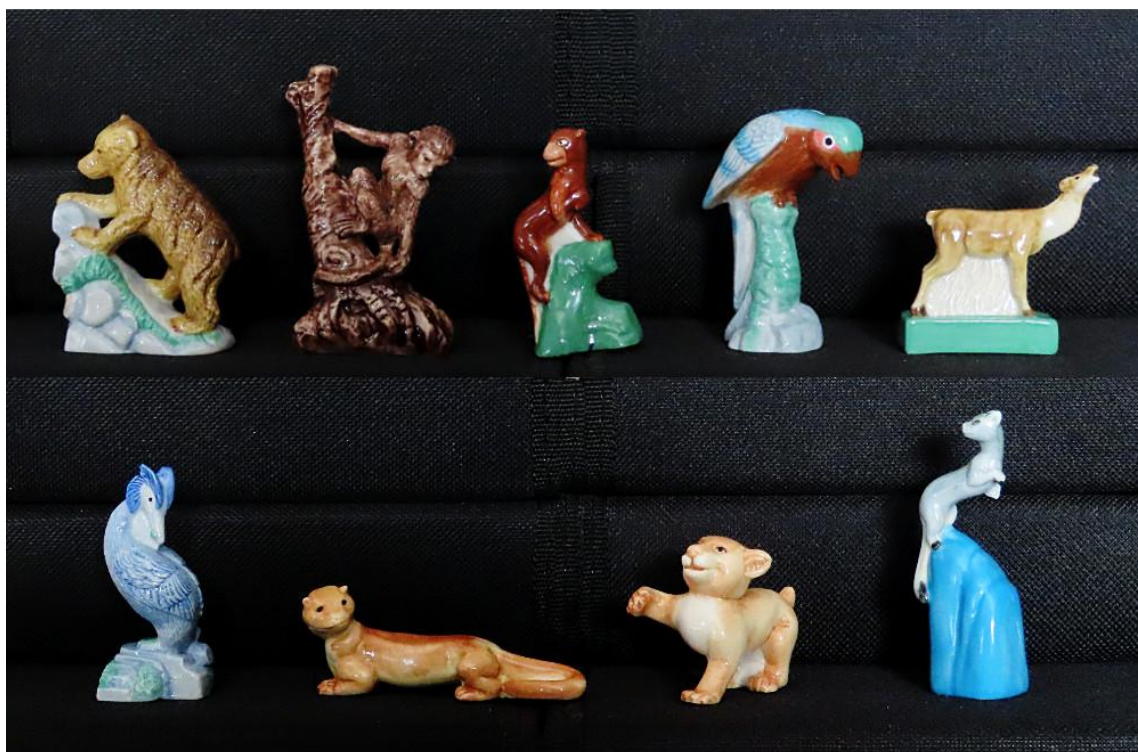
Madonna and Child was a gift to new members or for renewals. The stand was available, for purchase, to those who had purchased the full set by the end of the year.

Madonna and Child	Cherry	Ann
Mimi	Iris	Grace
Juliet	Humoresque	Argentina



2013 Display Stand \$75 (\$55; £44)

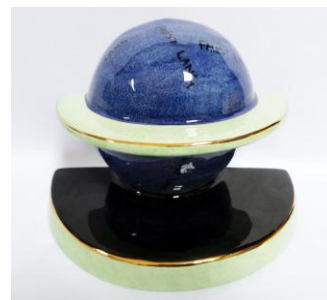
Official International Wade Collectors Club membership (renewal or new) (2014)
Faust Lang Whimsies Series ~\$140



Top to Bottom, Left to Right

Bear on Rock \$15 (\$11; £9)	Capuchin \$15 (\$11; £9)	Panther \$15 (\$11; £9)	Parrot \$20 (\$15; £12)	Stag \$15 (\$11; £9)
Grebe \$15 (\$11; £9)	Otter \$15 (\$11; £9)	Lion Cub \$15 (\$11; £9)	Ermine \$15 (\$11; £9)	

A limited edition display stand/globe was sold to members who had purchased the full series in 2014. **\$75** (\$55; £44)



Retail, Members-only and Wade Fest Commissioned Pieces

Aqua Land (2002 – 2003) Limited Edition of 250



Dolphin	\$30 (\$22; £17)	Seahorse	\$30 (\$22; £17)
---------	-------------------------	----------	-------------------------

Arundel Wade Fair (1998)



Arundel Bunny	\$15 (\$11; £9)
---------------	------------------------

Arundel Wade Fair (2001) **\$10** each (\$7; £6)



Otter (grey)	Otter (beige)	Otter (blue)
--------------	---------------	--------------

Arundel Wade Fair (2003) Limited Edition of 200 **\$10** each (7; £6)



Partridge (pink)	Partridge (burgundy)	Partridge (dark blue)
------------------	----------------------	-----------------------

Also produced in Gold (limited edition of 20) and in Silver (limited edition of 20)

Burslem Cat Whimsie, all-white (2014) **\$30** (\$22; £17)



Cat Dish (1974 – 1981) **\$25** (\$18; £14)



C&S Collectables/Wade Watch Limited Miniature Chintz Teapots (2001) \$45
 (\$15 each; \$11; £9)



Butterfly	Sweetpea	Thistle	Overhead view
-----------	----------	---------	---------------

Gold and Silver metallic glazed teapots also available in this set, \$25 each (\$18; £14)

C&S Collectables Direct Ltd. Limited Edition of 50



Tropical Angel Fish \$25 (\$18; £14)

C&S Collectables Direct Ltd. (2023)



Blue T-Rex, from the T-Rex Dinosaur Collection \$15 (\$11; £9)

Christmas Bonanza (2006) \$25 each (\$18; £14)



Burgundy Robin	Dark Green Robin
----------------	------------------

Christmas Special (2021)



Robin on a Mailbox	\$15 (\$11; £9)
--------------------	------------------------

Collect It! Magazine (2000)



Honey Bear Cub	\$10 (\$7; £6)
----------------	-----------------------

Dog Keychains



Bulldog	\$10 (\$7; £6)	St. Bernard, “Bruno”	\$10 (\$7; £6)
---------	-----------------------	----------------------	-----------------------

Exotic Birds Collection membership pieces (2022, 2023)



Puffin (2022) \$30 (\$22; £17)	Goldfinch (2022) \$35 (\$26; £20)	Canary (2022) \$35 (\$26; £20)
--	---	--



Peacock, Special Edition (2023) \$50 (\$37; £29)	Blue Budgie (2023) \$35 (\$26; £20)
--	---

Fawn Dish (1960s) **\$15** (\$11; £9)



General Foods (1990s)



Giant Panda: white base \$30 (\$22; £17)	Horned Owl: black eyes, orange beak, green base \$30 (\$22; £17)	Black Zebra with green base \$40 (\$29; £23)	Lion: honey; dark brown mane with green base \$30 (\$22; £17)
Rabbit: beige-grey with pink nose and black eyes \$40 (\$29; £23)	King Penguin: orange beak and feet \$30 (\$22; £17)	Elephant: grey with green base \$30 (\$22; £17)	Badger: grey body and white head with black eye stripe and green base \$40 (\$29; £23)

These pieces were not put into production so are hard to find. The Chimp (using the Whimsies mold but with black eyes and a red smile) can also be found.

Goodie Box 3-piece Burslem Cat Whimsies Set (2014) **\$20** each (\$15; £12)

20th Anniversary Limited Edition of 150 sets

This was a set of 3 Burslem Cat whimsies including one of each colour indicated below.



Black & White Burslem Cat Whimsie	Brown & White Burslem Cat Whimsie	Grey & White Burslem Cat Whimsie
-----------------------------------	-----------------------------------	----------------------------------

Harrisburg (US) Summer Wade Fest Dogs (1999 – 2007) \$10 each (\$7; £6)



	Black Poodle Limited Edition of 2000	Honey Husky	
White Mongrel Limited Edition of 550	Black Mongrel Limited Edition of 550		Black Terrier

The Mongrel was also produced in Gold with a limited edition of 100

Harrisburg (US) Summer Wade Fest Kittens (2000 – 2005) \$10 each (\$7; £6)



Black, pink ears, green eyes	Lightening (white) Limited Edition of 800	Thunder (black) Limited Edition of 1200
------------------------------	--	--

The Kitten was also produced in Gold with a limited edition of 100

Harrisburg (US) Summer Wade Fest (2001)



Pennsylvania Bunny “Nibbles” \$15 (\$11; £9)
--

Harrisburg (US) Summer Wade Fest (2003) Limited Edition of 600 **\$10** each (\$7; £6)



Honey Reindeer	White Reindeer
----------------	----------------

Also produced in all-over Gold (limited edition of 100), and as Honey with a Red Nose (limited edition of 70), both given away as prizes

Harrisburg (US) Summer Wade Fest (2004) **\$25** each (\$18; £14)



White Wren Limited Edition of 600	Blue Wren Limited Edition of 800
--------------------------------------	-------------------------------------

Also produced in all-over Gold

Harrisburg (US) Summer Wade Fest (2005) Limited Edition of 600 **\$10** each (\$7; £6)



All-over honey Whimsie-Land Rabbit	All-over grey Whimsie-Land Rabbit
---------------------------------------	--------------------------------------

Also produced in all-over Gold

Harrisburg (US) Summer Wade Fest (2006) Limited Edition of 600 **\$15** each (\$11; £9)



All-over honey Bulldog

All-over white Bulldog

Harrisburg (US) Summer Wade Fest (2015)



Green Tortoise **\$10** (\$7; £6)

Harrisburg (US) Summer Wade Fest (2022)



Green Hettie Hen **\$10** (\$7; £6)

Harrisburg (US) Summer Wade Fest (2023)



Green Piglet **\$10** (\$7; £6)

Kansas City Wade Fair (2000) Limited Edition of 927

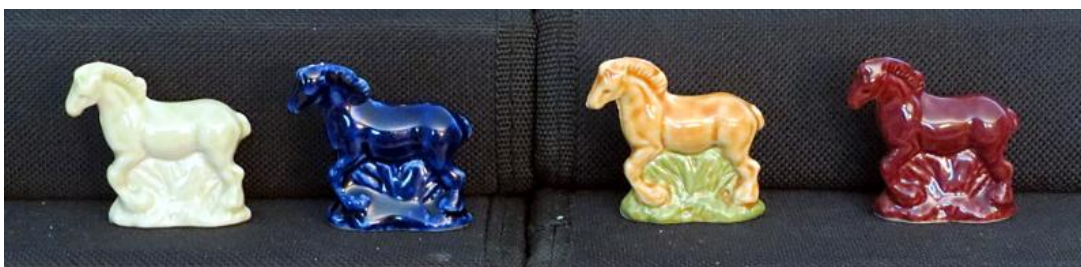


Armadillo, pale green	\$10 (\$7; £6)
-----------------------	-----------------------

Also produced in Brass with a limited edition of 1000

KS Wader “Horses of a Different Colour” (2003) Limited Edition of 250

\$25 each (18; £14)



Light Green	Dark Blue	Ginger on green base	Burgundy
-------------	-----------	----------------------	----------

*White horse with Gold metallic glazing also available in a limited edition of 100, **\$50** (\$37; £29)*

KS Wader “Cat Whimsies” (2005) Limited Edition of 400 **\$30** each (\$22; £17)



Siamese	Tuxedo	Calico	Ginger (<i>not shown</i>)
---------	--------	--------	-----------------------------

A Cobalt Blue cat and a Black and Gold cat were also available in a limited edition of 100.

An all-over Gold cat was available in a limited edition of 25 and given as draw prizes.

KS Wader “Rabbit Whimsies” (2005) Limited Edition of 250



Dutch (\$29; £23)	\$40 LE 300	Pink (\$22; £17)	\$30	Lavender (\$22; £17)	\$30	Calico (\$29; £23)	\$40
----------------------	-----------------------	---------------------	-------------	-------------------------	-------------	-----------------------	-------------

A White rabbit and a White and Gold rabbit were also available separately.

Note: In 1999 (Chinese Year of the Rabbit) a Blue rabbit and an all-over Gold rabbit were issued with the first Memory Jar in limited editions of 450 and 50 respectively.

Blue Rabbit	\$40 (\$29; £23)
-------------	-------------------------



Pearlized Figurines, Wade Collectors Fairs (2001 – 2007) \$15 each (\$11; £9)



Snail	Duck	Seahorse	Penguin
Giraffe	Puppy	Polar Bear	Dolphin



Great Dane	Bull Terrier	Basset Hound	Boxer
------------	--------------	--------------	-------

Pin Trays (1957 – 1959) \$15 each (11; £9)



Terrier	Bluebird	Spaniel
---------	----------	---------

Pixie/Shamrock Dish (1978 – 1980) \$15 (\$11; £9)



Posy Vases (1957 – 1959)



Koala \$15 (\$11; £9)	Bluebird \$15 (\$11; £9)	Monkey \$20 (\$15; £12)
-----------------------	--------------------------	-------------------------

Pups in Baskets (1974 – 1981)



Alsatian	\$15 (\$11; £9)	Cairn	\$15 (\$11; £9)	Red Setter	\$15 (\$11; £9)
----------	------------------------	-------	------------------------	------------	------------------------

Red Rose Tea Fair (November 2008) Limited Edition Of 70 **\$40** for the set of 3 (\$29; £23)



3 Squirrels: black nut, brown nut, green nut

A fourth squirrel was produced for this set with a gold nut and base, also in a limited edition of 70. In addition to the four, the squirrel was also produced in all-over Gold and in all-over Silver, both in limited editions of 20.

Sam and Sarah Walking Their Dog (2016)



Whimsies: **\$20** each (\$15; £12)

Spillers Foods Ltd. Retriever (1991) \$15 (\$11; £9)



Swallows (1956 – 1960) \$15 each (\$11; £9)



Green	Beige and Grey
Blue	Yellow with touches of green

Tom Smith Miscellaneous Crackers (1992) \$15 each (\$11; £9)



All-blue Bluebird

Pale green Bluebird
(unknown release, possibly 2007 – not Tom Smith Crackers)

Tortoise Family (1958 – 1988) \$40



Father Tortoise (\$15; £12)	\$20	Mother Tortoise (\$11; £9)	\$15	Baby Tortoise (\$4; £3)	\$5
--------------------------------	-------------	-------------------------------	-------------	----------------------------	------------

Father Tortoise is actually a trinket box or ash tray with a removable shell/lid.

Tortoise Ash Bowl (1958 – 1984) 6" diameter \$30 (\$22; £17)



Traufler's Animal Figurines (1992)

Traufler specialized in imported tableware that featured sheep, shepherds, and farmyard scenes. Wade Ceramics Ltd. produced four animal figurines to help promote these lines.



Cockerel & Hen Salt & Pepper Set
\$60 (\$44; £35)



Large Sheep
\$20 (\$15; £12)

Small Sheep
\$15 each (\$11; 9)

US West Coast Wade Fest Eagles (2002) Limited Edition of 300



Red \$20 (\$15; £12)	White \$20 (\$15; £12)	Blue \$20 (\$15; £12)	Black (LE 100) \$40 (\$29; £23)
--------------------------------	----------------------------------	---------------------------------	---

This Eagle was also produced in all-over Gold in a limited edition of 10, given away as prizes

US West Coast Wade Fest Orcas (2003) Limited Edition of 300



All-over white \$50 (\$37; £29)	Black on blue base \$30 (\$22; £17)	Black & white on black base \$30 (\$22; £17)	Black & white on blue base \$30 (\$22; £17)
---	---	--	---

Also produced in all-over Gold with a limited edition of 9, given away as prizes

“Village Stores” Salt & Pepper Shakers (1980s) \$20 (\$15; £12)



Note: other pieces in the “Village Stores” set are a teabag canister (**\$60**; \$44; £35), sugar canister (**\$60**; \$44; £35), flour canister (**\$60**; \$44; £35), coffee canister (**\$60**; \$44; £35), cheese dish (**\$35**; \$26; £20), and butter dish (**\$35**; \$26; £20). A special tea canister was commissioned by Kellogg Salada Tea, shown with the Kellogg Salada promotion. **\$60** (\$44; £35)

Wade Collectors Fair (1999)



Van Hallen Penguins \$45 (\$33; £26)	Van Hallen Seals \$45 (\$33; £26)
--	---

Wade Collectors Meet (2002)



Honey Shetland Pony \$10 (\$7; £6)

Wade Collectors Meet (2003)



Grey Whimsie-Land Badger \$10 (\$7; £6)
--

Wade Collectors Meet (2004)



Apricot Whimsie-Land Fox \$10 (\$7; £6)
--

Also produced in all-over gold, limited edition of 20

Wade Collectors Meet (2006)



Beige Panda **\$10** (\$7; £6)

Also produced in all-over Gold (limited edition of 100), and in all-over Silver (limited edition of 20)

Wade Fair Bran Tub Draws (2003) \$5 each (\$4; £3)



Blue/Grey Terrapin



Pale Green Frog



Honey Alligator

Wade Fair Bran Tub Draws (2006 – 2007) \$5 each (\$4; £3)



Blue Cockatiel



Grey Shetland Pony



Tan Puppy

Wade Whimsie Day (2019)



Panda with green bamboo leaves **\$40** (\$29; £23)

Whimtrays, various (1958 – 1987) \$10 each (\$7; £6)



Back row: Cockatoo, Snowy Owl, Llama, Polar Bear Cub
 Middle row: Husky, Fawn, Lion Cub, Bear Cub
 Front row: King Penguin, Panda

Trout

Winter Wonderland (2002 – 2003)



Polar Bear Cubs on Ice (2002)	Mother Polar Bear with Cub (2003)
\$35 (\$26; £20)	\$35 (\$26; £20)